

Cartridge Heater with Metal Sheath



Description

Cylindrical heating element for a wide field of applications. Element can be used as:

- Radiation Heater
- Conductive Heater
- Heating Element for direct and indirect heating of fluids
- Soldered into screw head you get a complete heating element that can be furnished with enclosure and control thus providing a self-contained heating unit

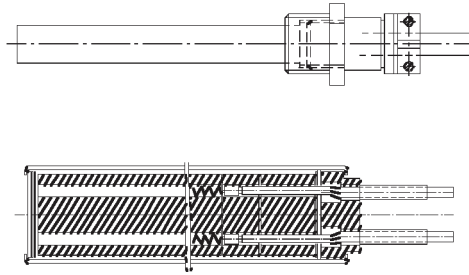
Features

- Controllable heat output by resistance wire technology
- Heating element embedded in ceramic body insulated from sheath tube with magnesium oxide if required.
- Heat transfer by contact, radiation or convection

Design Characteristics

- Sheath diameter: 10; 12; 12,7; 15; 16; 17; 18; 20; 24; 28; 32 mm
- Sheath material brass, stainless steel
- Corrosion-proof if suitable material has been chosen
- Sheath temperatures brass up to 250°C, stainless steel up to 600°C
- Connection on one side
- Heater connection formats available:
 - nickel wire with glass-fibre reinforced tubing maximum temperatures up to 250 C, length as desired
 - bare nickel wire
 - Nickel wire with glassfibre tube insulation
- sections with increased power output possible
- small cold zone
- Wattage and voltage as desired
- Cartridge bottom crimped, soldered or welded
- Mounting elements, such as metal flange with fastening bores, metal strap with fastening bores, threaded flange with gasket possible

Cartridge Heater with Metal Sheath



Design Characteristics

- Terminal enclosures of plastic-coated sheet steel
- Ø40 x 48 up to flange size G ¾"
- Ø80 x 97 up to flange size G 1½" (control optional)
- Mounting: directly immersed in liquid, in corresponding bore hole, (bore diameter = tube diameter + 0,5 mm)

Applications

- Baking Ovens
- Heating of Oil, Water, Brine etc.
- Tools
- Heating Plates
- Dies
- Welding Tools

DBK's knowledge of thermal management gives us the experience to guide and support you with your technical challenges - we can manage the complete project from concept to full production release.